

blanke®

air



RETRACTABLE AIR HOSE REEL

MODEL NO: HVR15

PART NO: 3122011

INSTALLATION & USER GUIDE

ORIGINAL INSTRUCTIONS

GC10/23

INTRODUCTION

Thank you for purchasing this CLARKE product. This retractable air hose reel incorporates a spring driven, automatic rewind with locking ratchet mechanism. It can be installed in any location using the integral mounting bracket and can be swivelled to cover a wide range of movement.

- Dimensions; L=460x W=400mm x D=130mm
- Weight 12.45kg
- Main Air Hose Size:-1/4" BSP connector /main hose x 15m long
- Reel Air Inlet (M): 1/4" BSP/1M long hose
- Maximum Rated Pressure: 16bar @ 23°C or 11 bar @ 60°C

Before attempting to use this product, please read this manual thoroughly and follow the instructions carefully. In doing so you will ensure the safety of yourself and that of others around you, and you can look forward to your purchase giving you long and satisfactory service.

GENERAL SAFETY RULES

1. NEVER exceed the rated operating pressure for this product.
2. NEVER allow children to use the hose reel. Keep children clear of the work area at all times.
3. NEVER allow the hose to retract freely. It should always be restrained to prevent air tools from whipping back with resultant personal injury or damage to property.
4. ALWAYS check for damage before using the hose. Any damage should be properly repaired or the part replaced. Consult your local dealer.
5. ALWAYS ensure that a trailing hose does not constitute a trip hazard.
6. ALWAYS take appropriate safety precautions when using compressed air.
7. Wear safety glasses to protect against compressed air driven particles.

ENVIRONMENTAL RECYCLING POLICY

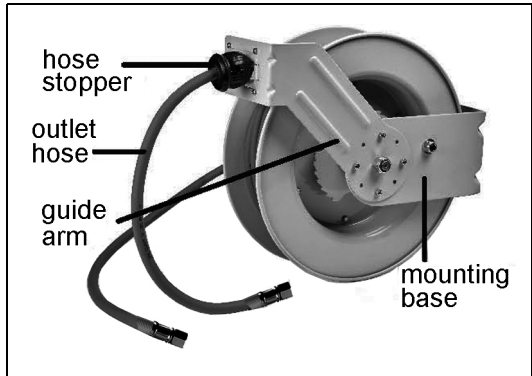


If disposing of airline products or any damaged components, do not dispose of with general waste. This product contains valuable raw materials. Metal products should be taken to your local civic amenity site for recycling of metal products.

INSTALLATION

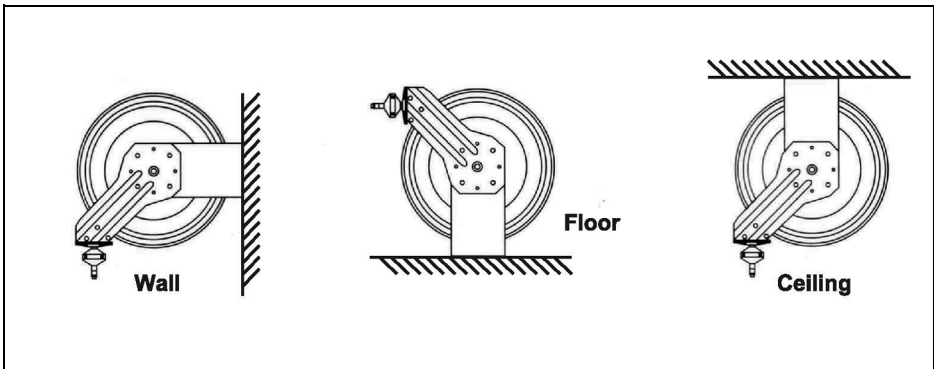
The hose reel may be mounted to a wall, floor, or ceiling as required. Ensure the mounting hardware and the mounting position is of sufficient strength to support the hose and reel, plus the force required to extend the hose.

Choose a suitable mounting position close enough to the air compressor that the two items can be connected together using a shorter length of hose and from where the air compressor can be conveniently adjusted.



Mount the reel using four holding down bolts with washers (supplied) and secured through slots in the mounting bracket. Use washers on the mounting bolts to help bear the weight of the reel.

TYPICAL MOUNTING POSITIONS



CONNECTING THE HOSE

After the reel is secured in position, attach the air hose coming from the compressor. Wrap the threads of the male connector on the incoming hose with PTFE tape or thread sealant and connect to the air inlet valve on the side of the hose reel. Again using PTFE tape when connecting the hose to any air powered tools being used.

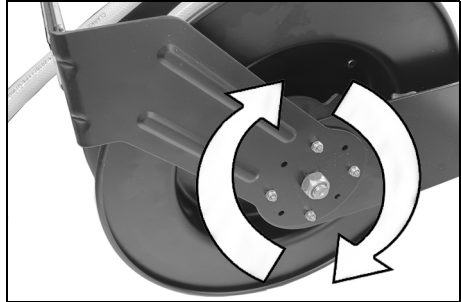
Ensure air connections are properly sealed using PTFE tape or pipe sealant.

ADJUSTING THE GUIDE ARM

Pull out a metre of hose and allow the reel to lock in position.

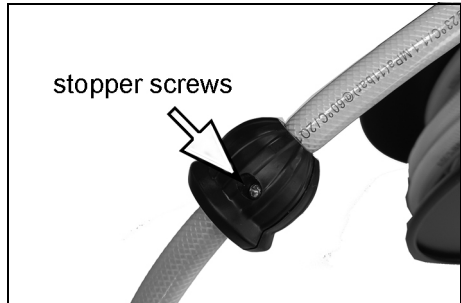
Remove the four bolts connecting the guide arm to the support post.

Rotate the guide arm in 90° increments to the desired position. Replace the four bolts and tighten.



ADJUSTING THE HOSE STOPPER

The hose stopper determines the length of hose that remains outside the reel. To adjust, pull the hose out past the desired position of the hose stopper and latch the reel. Loosen both stopper screws and move the stopper to the required position. Tighten the stopper screws.



OPERATION & USE

Check the hose reel for correct operation as follows:

Gently pull out the hose - a series of clicks will be heard every half revolution of the drum.

When a click is heard, release the hose. It should be held by the latch. Continue to pull out the hose, and after a series of clicks, at various lengths, release it to check the operation of the latch.

To release the latch, give the hose a brief pull, and allow the hose to retract under control until the stopper rests on the hose guide. **DO NOT** suddenly let go of the hose. If the hose becomes twisted, pull out a long length of hose before retracting so as to smooth out the hose.

When not in use, avoid leaving the hose reel exposed to very low temperatures which will make the hose less flexible and difficult to retract.

Avoid contact with chemicals and solvents such as acetone, white spirit etc.

MAINTENANCE



WARNING: BEFORE CARRYING OUT ANY MAINTENANCE OR REPAIRS, BE SURE TO TURN OFF THE AIR SUPPLY TO THE HOSE REEL AND VENT ANY PRESSURE IN THE AIR LINE.

Periodically, check the hose for wear and damage and for leakage using soapy water. Any damage or leaks should be repaired before further use. If the hose becomes very dirty, clean it with soapy water before retracting it into the reel.

Where possible, store the reel and hose in a sheltered position out of direct sunlight.

ADJUSTING THE RECOIL TENSION

1. Disconnect the incoming air supply.
2. Pull out about 2 feet of hose and latch the reel.
3. Remove the hose stopper.
4. While firmly holding onto the edge of the reel drum, unlatches the reel and carefully allow the drum to slowly re-wind, drawing the hose end back through the guide arm roller assembly and onto the reel. Latch the reel in position.
 - To increase tension: Unlatch the reel and turn clockwise (as viewed from the air inlet side).
 - To decrease tension: Unlatch the reel and rotate slowly counterclockwise (as viewed from the air inlet side).
5. Once the desired spring tension is reached, latch the reel in position, feed the hose end through the roller assembly in the guide arm and re-attach the hose stopper.
6. Re-connect the air supply.

REPLACING THE HOSE

1. Secure and stabilise the hose reel. The hose can normally be replaced with the reel still mounted.
2. Disconnect the incoming air supply.
3. Pull out the entire length of hose and lock the reel. Ensure it is securely locked in place.

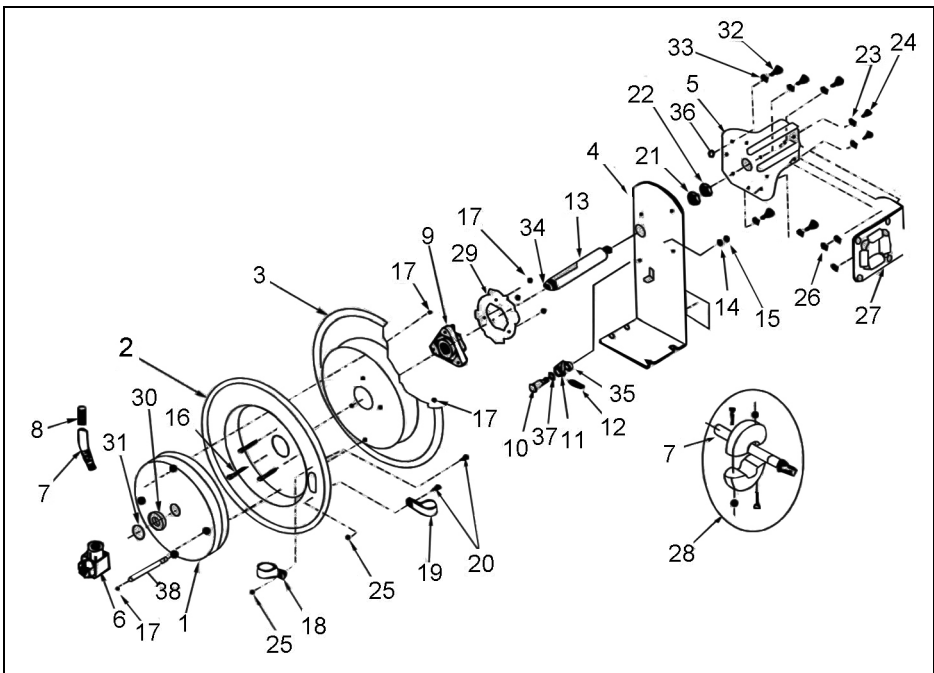
4. Unscrew the hose clamps that secure the hose to the drum. Disconnect the inlet end of the hose from the air inlet valve.
5. Pull the inlet end hose through the slot in the drum and guide rollers, removing the old hose completely
6. Remove the spring hose guard, hose clamp and hose stopper from the old hose. Fit these parts onto the new hose in identical positions.
7. Feed the inlet end of the hose through the guide rollers and slot into the drum. Apply PTFE sealant tape or thread sealant to the hose connector and connect to the inlet valve.
8. Attach the hose clamp to the drum. Rewind the hose onto the reel using normal operation.

COMPONENT PARTS

ID	DESCRIPTION
1	Spring canister
2	Drum (air inlet side)
3	Drum (mounting bracket side)
4	Mounting bracket
5	Guide arm
6	Air inlet valve assembly
7	Hose
8	Spring hose guard
9	Hub bearing assembly
10	Bolt
11	Locking cam
12	Spring
13	Axle
14	Lock washer
15	Nut
16	Bolt
17	Nut
18	Clamp
19	Clamp

ID	DESCRIPTION
20	Bolt
21	Washer
22	Bolt
23	Washer
24	Bolt
25	Nut
26	Locknut
27	Roller guide bracket assembly
28	Hose stopper assembly
29	Ratchet locking gear
30	Spacing washer
31	Retaining ring
32	Bolt
33	Lock washer
34	Setscrew
35	Spacing washer
36	Nut
37	Spacing washer
38	Pin

COMPONENT PARTS



GUARANTEE

This product is guaranteed against faulty manufacture for a period of 12 months from the date of purchase. Please keep your receipt which will be required as proof of purchase.

This guarantee is invalid if the product is found to have been abused or tampered with in any way, or not used for the purpose for which it was intended.

Faulty goods should be returned to their place of purchase, no product can be returned to us without prior permission.

This guarantee does not effect your statutory rights.

A SELECTION FROM THE VAST RANGE OF

Clarke®

QUALITY PRODUCTS



AIR COMPRESSORS

From DIY to industrial, Plus air tools, spray guns and accessories.

GENERATORS

Prime duty or emergency standby for business, home and leisure.

POWER WASHERS

Hot and cold, electric and engine driven - we have what you need

WELDERS

Mig, Arc, Tig and Spot. From DIY to auto/industrial.

METALWORKING

Drills, grinders and saws for DIY and professional use.

WOODWORKING

Saws, sanders, lathes, mortisers and dust extraction.

HYDRAULICS

Cranes, body repair kits, transmission jacks for all types of workshop use.

WATER PUMPS

Submersible, electric and engine driven for DIY, agriculture and industry.

POWER TOOLS

Angle grinders, cordless drill sets, saws and sanders.

STARTERS/CHARGERS

All sizes for car and commercial use.

PARTS & SERVICE: 0208 988 7400

Parts Enquiries

Parts@clarkeinternational.com

Servicing & Technical Enquiries

Service@clarkeinternational.com

SALES: UK 01992 565333 or Export 00 44 (0)1992 565335

Clarke INTERNATIONAL Hemnall Street, Epping, Essex CM16 4LG
www.clarkeinternational.com